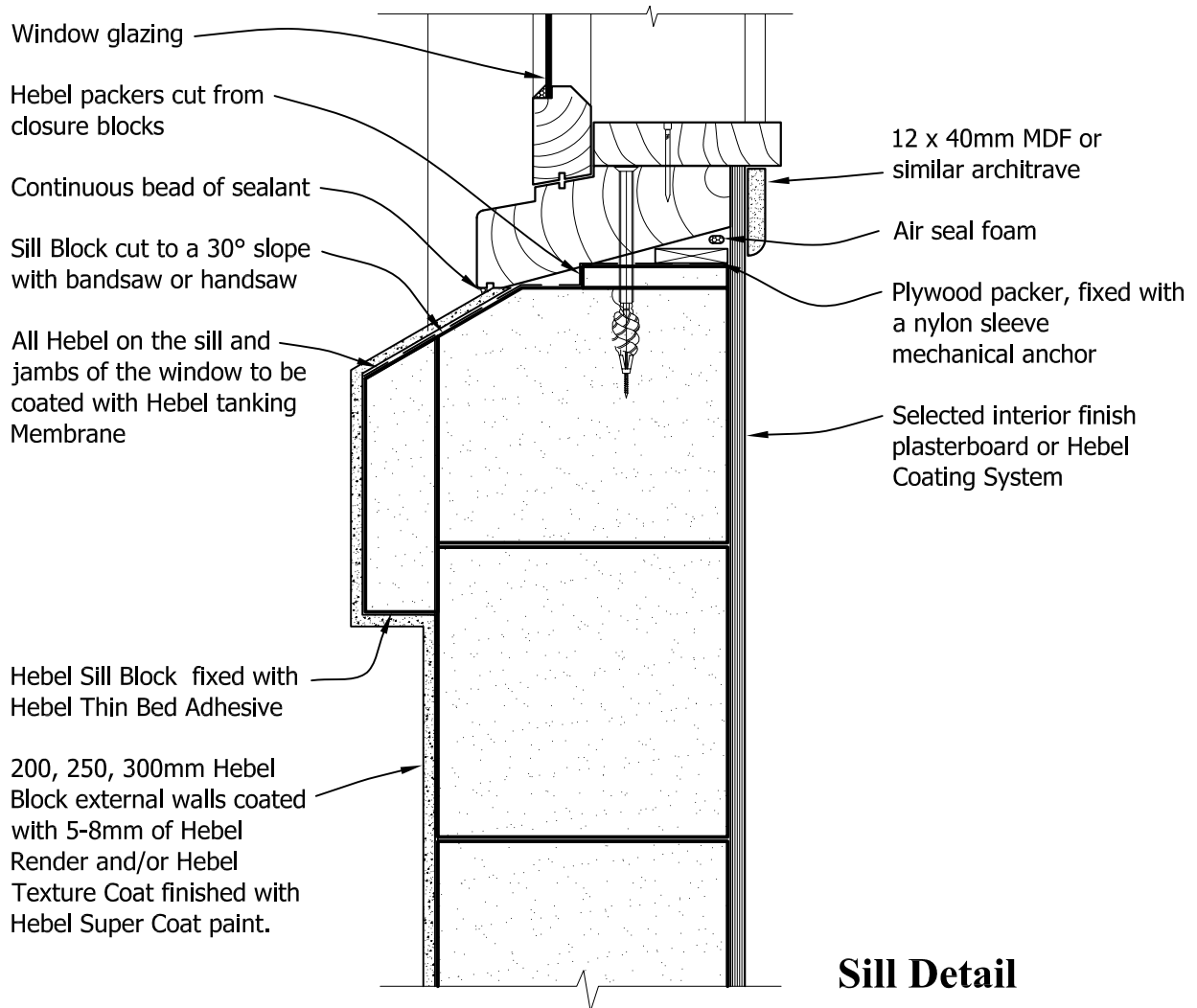


Head Detail



Sill Detail

Hebel

Lightweight Concrete NZ Ltd

67 Reid Rd., PO Box 2398, Dunedin
Ph 03 455 1502 www.hebel.co.nz

Title:

Timber Window Detail

Date: July 07

Scale. **1 : 5**

Detail No. **BLK-9.4**

This drawing must be read in conjunction with the Hebel Technical Manual