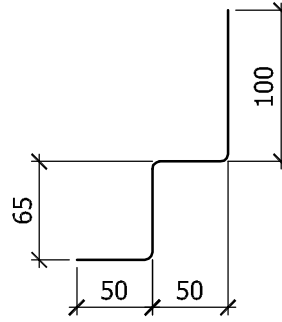


*Z flashing for concrete paving
All steel 0.55 gauge or
aluminium 1.5mm*



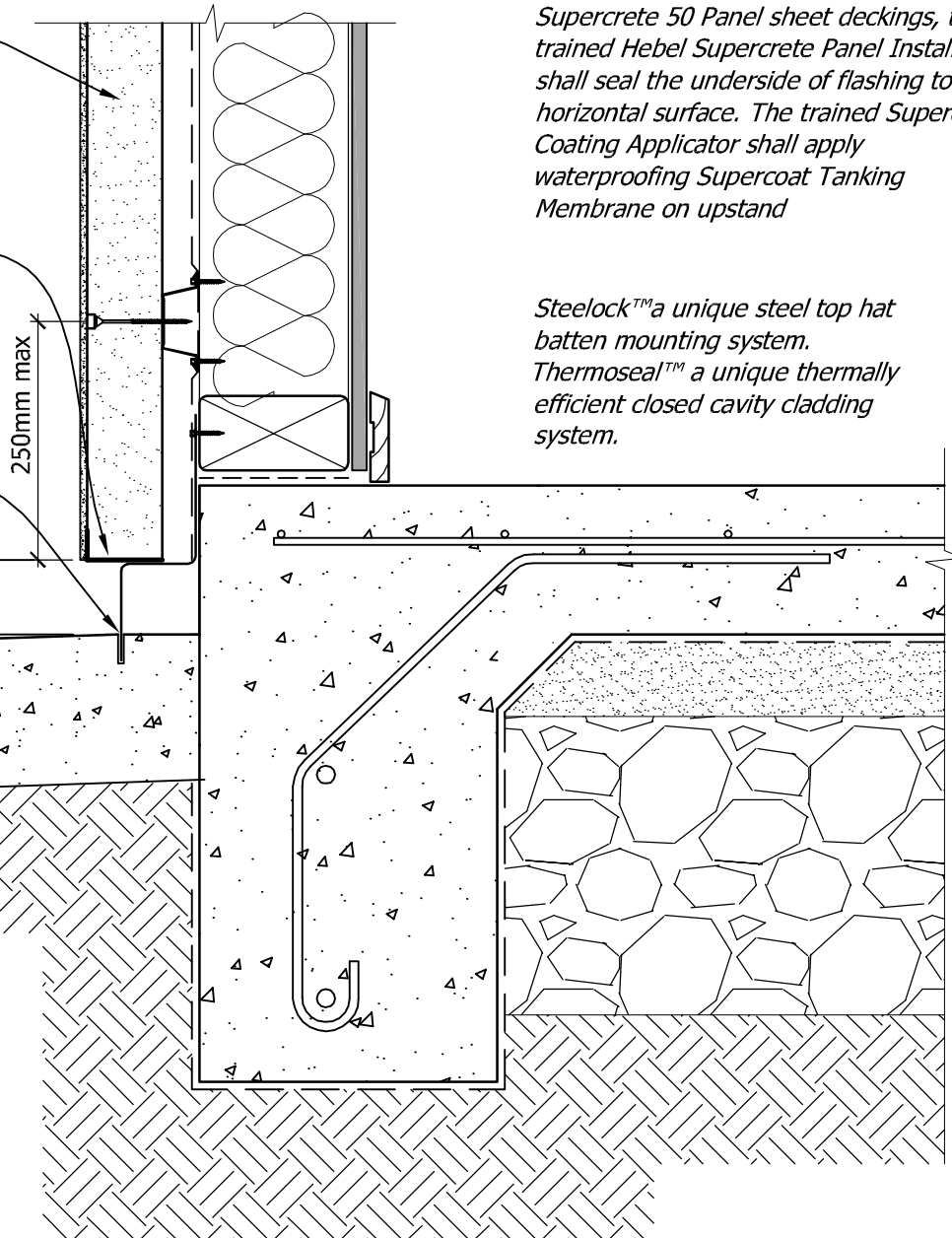
*W flashing for sheet decking
All steel 0.55 gauge or
aluminium 1.5mm*

Supercrete 50 Panel

*Coat underside and bottom
20mm of panel face with
Supercoat Tanking
Membrane. Apply Render
Stop along front edge see
Detail S50C 1*

*Z flashing fastened to
bottom plate and located in
16mm deep sawcut in
paving, with Holdfast FIX
ALL 220LM MS sealer all
round*

*Paving to slope away from
foundation*



*NOTE: For plywood, fibre cement or
Supercrete 50 Panel sheet deckings, the
trained Hebel Supercrete Panel Installer
shall seal the underside of flashing to the
horizontal surface. The trained Supercoat
Coating Applicator shall apply
waterproofing Supercoat Tanking
Membrane on upstand*

*Steelock™ a unique steel top hat
batten mounting system.
Thermoseal™ a unique thermally
efficient closed cavity cladding
system.*

Typical detail for finishing panel above paving or solid decking

Supercrete

50

Title: **Z or W Base Cavity Closures for
use with Decks/Paving**

Date: September 2011

Scale: 1:5

Detail No. **S50C 6-9**

This drawing must be read in conjunction with the Supercrete 50 Cladding System Design & Installation Guide