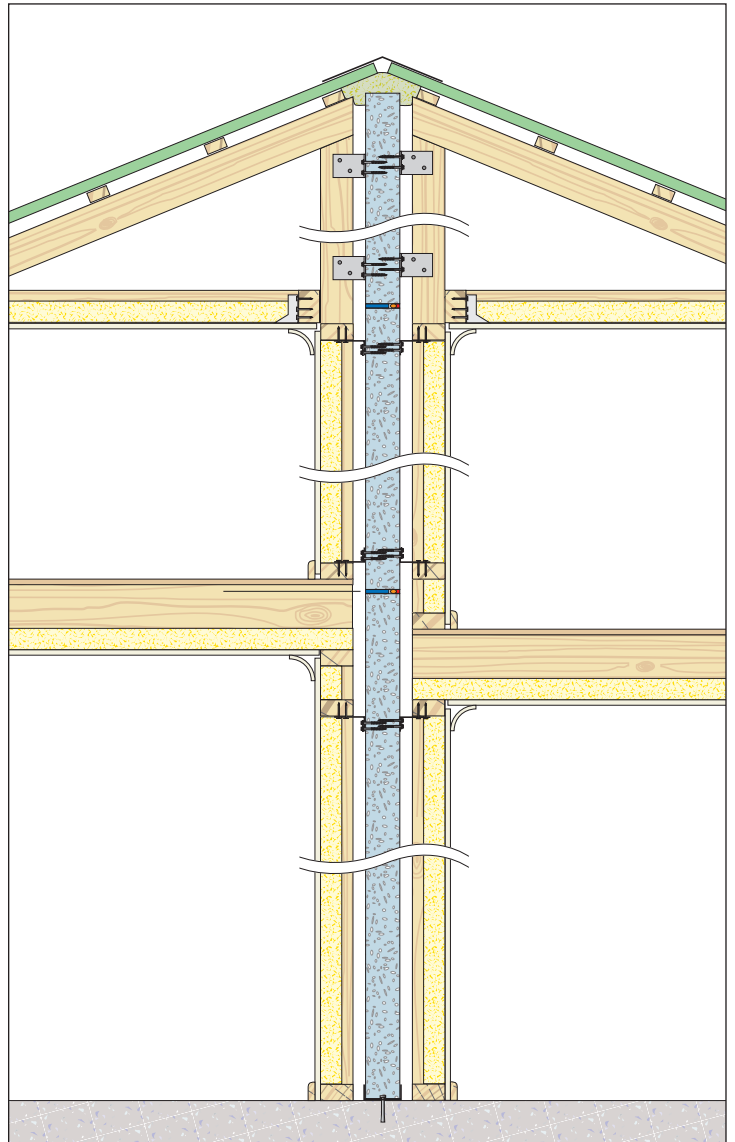
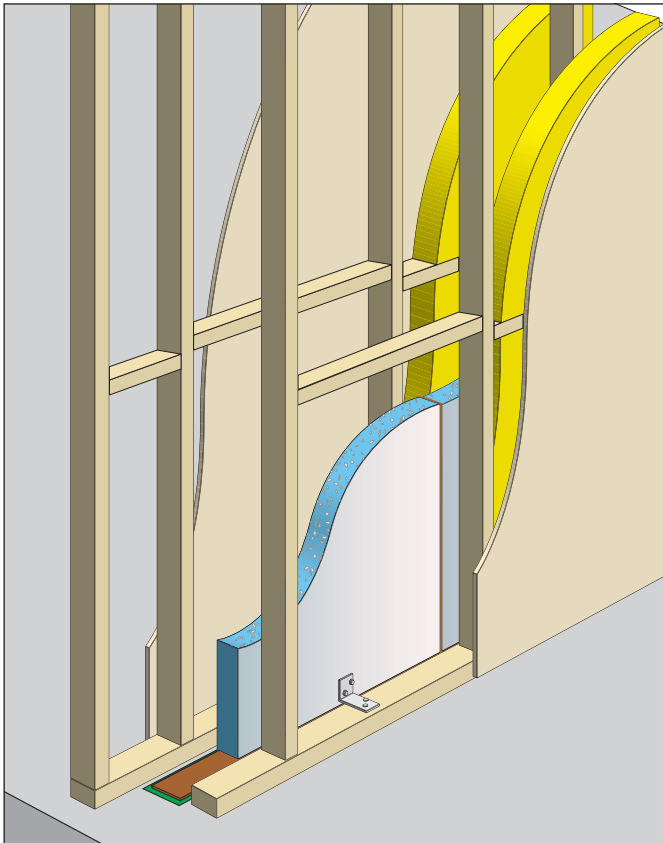


Low Rise Multi-Residential Intertenancy walls with PowerPanel^{XL}



Discontinuous construction using brackets for superior acoustics



PowerPanel system for discontinuous construction	
Acoustic STC	58 or higher*
Fire	90/90/90
Wall Thickness	From 295mm*

*Depending on stud, cavity and plasterboard selection

Benefits of using Hebel PowerPanel^{XL} for Intertenancy walls

- Solid masonry system with proven robust performance, boasting superior acoustic NZBC compliance
- Intertenancy walls are easily installed from the inside
- Installation is fast, unaffected by weather and can be done by the framing contractor
- Quality product maintains performance and integrity over time
- No additional plasterboard required in the roof space to achieve fire rating
- Simple service installation with design integration of adjoining walls
- Made and supported by CSR Building Products



Better buildings are constructed with Hebel

Hebel PowerPanel^{XL}:

- A high performance AAC building product ideal for intertenancy wall systems.
- Proven, scientifically tested and trusted by leading builders.
- Australian made for New Zealand conditions and backed by CSR.

What is Hebel?

Hebel is a strong, versatile, high performance building product made from Autoclaved Aerated Concrete (AAC).

All Hebel products in NZ are designed and manufactured in Australia by CSR Hebel. With over 25 years of experience, you can be assured that you are getting a high quality product from one of the most trusted names in building, with the local technical expertise to back it up.

Hebel is easy to handle, quick to build with, and better to live in.

Hebel panels contain anti-corrosion protected steel reinforcement for added strength and are available in a range of lengths for applications including walls, floors and external cladding.



Hebel panels contain anti-corrosion protected steel reinforcement for maximum strength and durability, and are available in a range of sizes.



QUALITY AND SPEED

Hebel wall panels are faster to construct and require significantly less labour compared to traditional intertenancy construction techniques leading to substantial savings in on-site costs. Building with Hebel means less mess on-site, a cleaner, safer work area during construction and less clean-up at completion of building.



STRONG AND SOLID

Lightweight Hebel PowerPanel^{XL} can be easily installed by a crew of 2 to 3. Hebel solid, steel reinforced PowerPanels also provide a high degree of security between units. The ultimate "party wall" system.



NOISE REDUCTION

Hebel pioneered the introduction of lightweight aerated concrete wall panels providing acoustic performance levels at or above $R_w + C_{tr} = 50$ (STC=58) in high rise multi-residential buildings. Achieving acoustic compliance with NZBC is simple and easy to achieve with Hebel PowerPanel^{XL}.



ENERGY EFFICIENT

Hebel's unique properties provide superior insulation qualities. The unique combination of thermal resistance along with low mass, make building with Hebel a smart choice when considering building efficiency. It can help save on energy costs.



FIRE RESISTANT

Hebel is non-combustible and renowned for its highly fire resistant properties and achieves an FRR (Fire Resistance Rating) of 90 minutes* (tested at CSIRO).

*Note: Fire Resistance Ratings were achieved with the overall PowerPanel system.



ECO-FRIENDLY

Independent testing shows that overall, Hebel has a 30% lower environmental impact than concrete or brick veneer. Hebel panels use 60% less embodied energy and produces 55% less greenhouse emissions compared to concrete or brick veneer, making it a more sustainable, environmentally friendly choice of building material.



PROVEN

CSR Hebel is the only manufacturer of AAC in Australia. With over 25 years of experience in developing, testing and producing AAC you can be assured you're getting high quality products and systems and unmatched technical expertise with Hebel.

For sales enquiries or further information, please telephone us on:
0800 4 HEBEL (0800 443 235)
www.hebel.co.nz



hebel[®]

The better way to build

