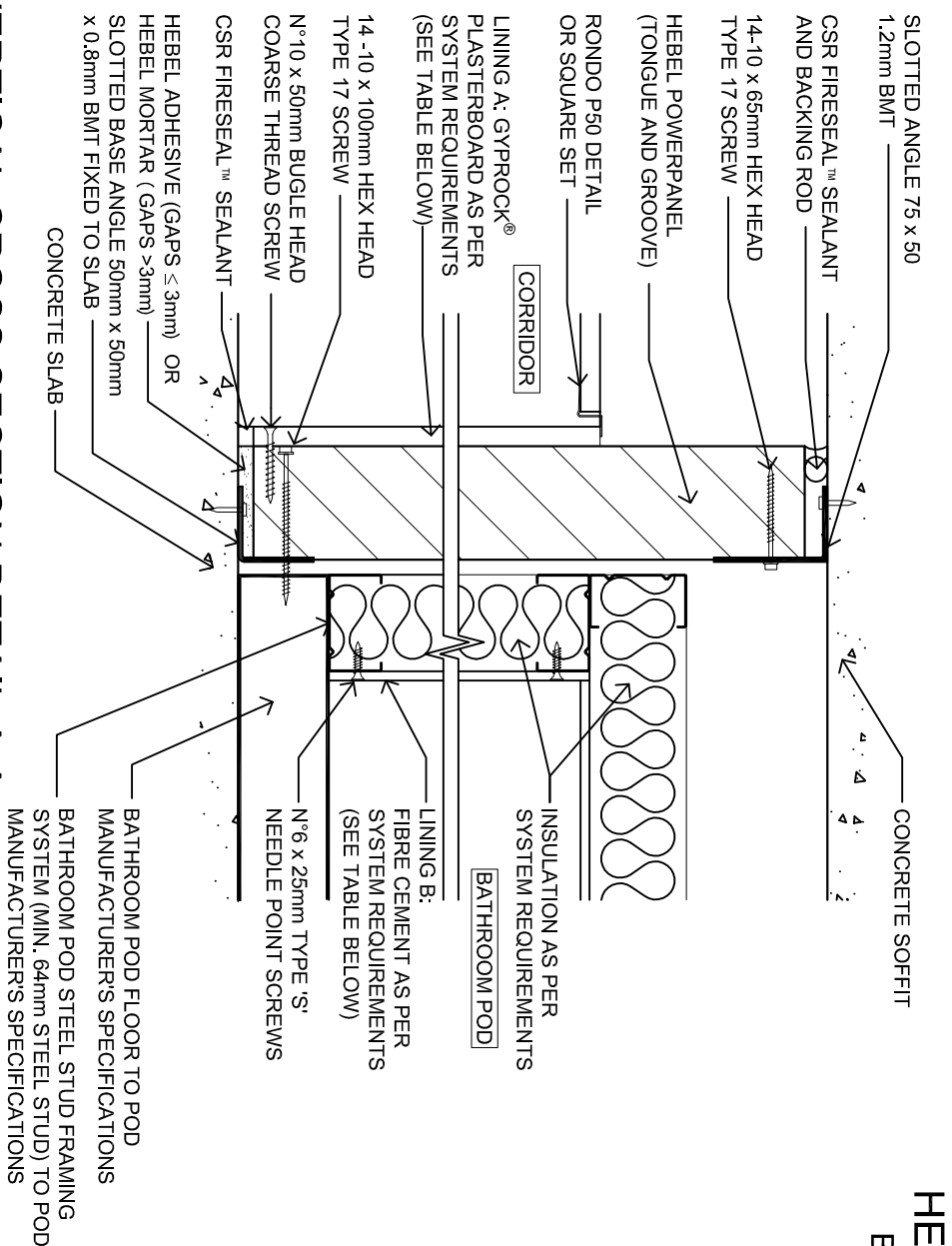
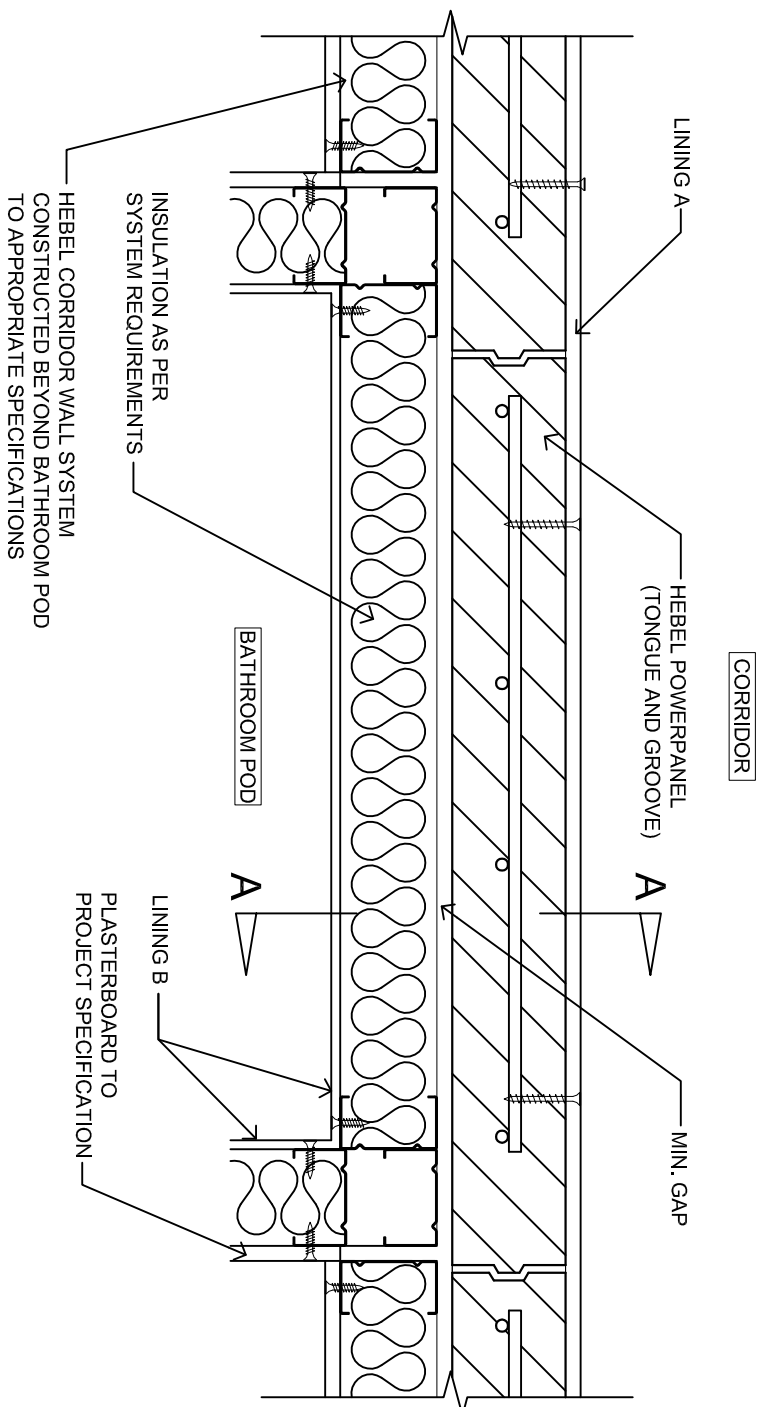


BATHROOM POD ONE SIDE

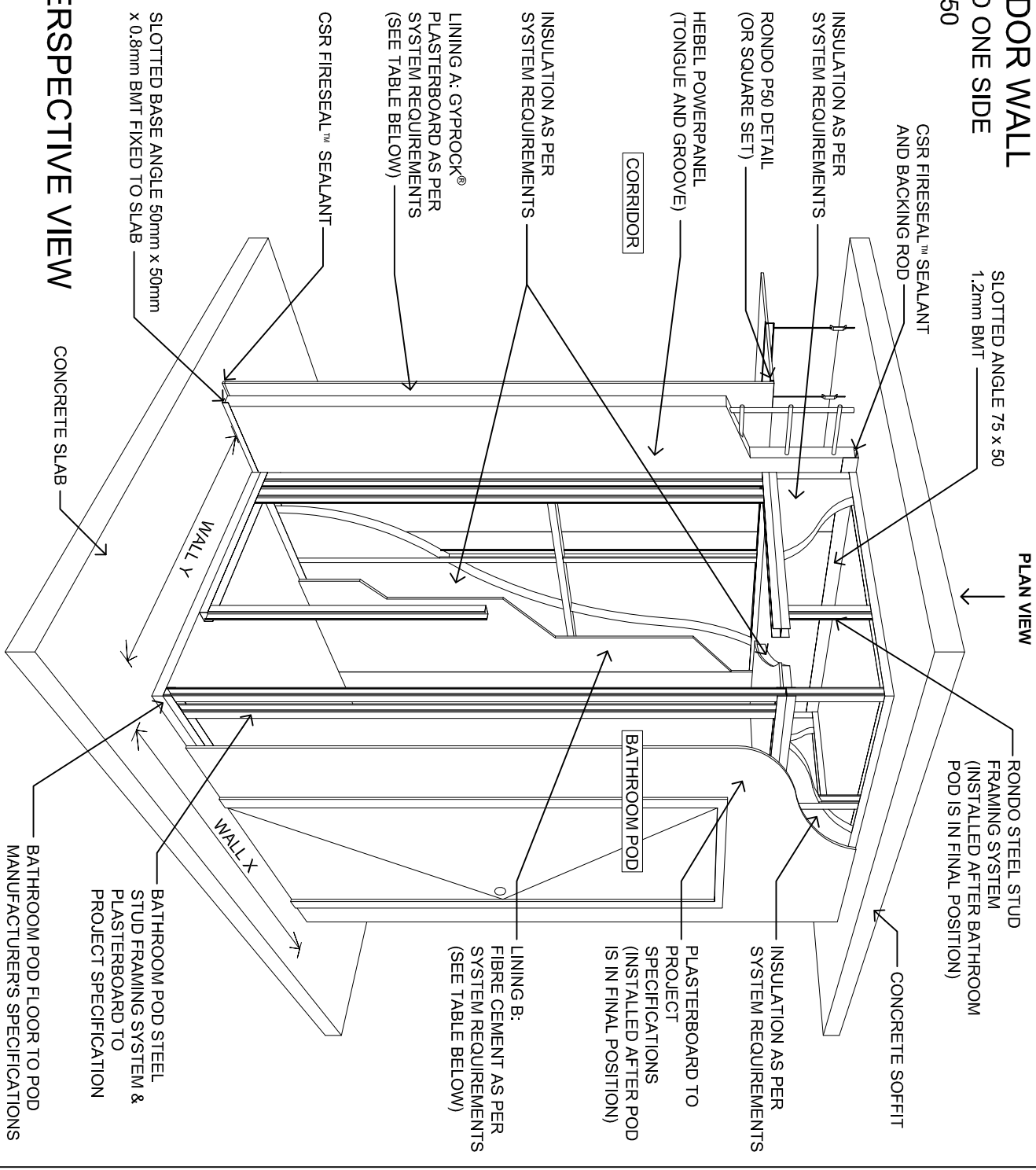
HEB 1450



VERTICAL CROSS SECTION DETAIL A-A



DETAIL PLAN VIEW



PERSPECTIVE VIEW

CORRIDOR WALL									
CODE	APPLICATION	WALL WIDTH	WALL HEIGHT	FRL ^(a)	R _w ^(b)	SYSTEM COMPONENT VARIATIONS			
						LINING A	MIN. GAP	LINING B	
HEB 1450	CORRIDOR TO BATHROOM POD	168mm	UP TO 3.3m HIGH	-/90/90 FOR WALL HEIGHTS UP TO 3.3m	≥50dB	13mm GYPROCK CD	10mm	75mm BRADFORD ACOUSTIGARD 11, OR 75mm MARTINI PRIME 75, OR 70mm SPRAY FOAM (11kg/m³)	6mm FIBRE CEMENT

(A) FRL VALUES SHOULD BE READ IN CONJUNCTION WITH CSIRO FIRE OPINION FCO FCO-3036. FOR WALLS > 3.3m AND ≤ 4.65m, HEBEL POWERPANEL CAGED TONGUE & GROOVE WILL ACHIEVE A FRL OF +120/120.

(B) ACOUSTIC VALUES SHOULD BE READ IN CONJUNCTION WITH ACOUSTIC LOGIC ASSESSMENT REPORT 20151586.3/0707AR5/GW.

(C) WHERE BATHROOM PODS ARE INSTALLED ALONG SIDE A FACADE WALL AND ONE POD WALL FORMS PART OF THE FACADE WALL CONSTRUCTION, THE INSTALLATION USED IN THIS WALL MUST BE DEEMED NON-COMBUSTIBLE.

GENERAL NOTES:

1. INSULATION & PLASTERBOARD ARE REQUIRED AROUND BATHROOM POD PERIMETER TO CONCRETE SOFFIT.
2. FOR MORE CONSTRUCTION AND PRODUCT INFORMATION REFER TO HEBEL DESIGN AND INSTALLATION GUIDE FOR HIGH RISE APARTMENTS, HOTELS, STUDENT ACCOMMODATION - CORRIDOR, INTERTENANCY, SHAFT & SERVICE WALLS (HEBIT117).